

SPINVIEW

Data Drives Sustainability

Spinview.io
hello@spinview.io

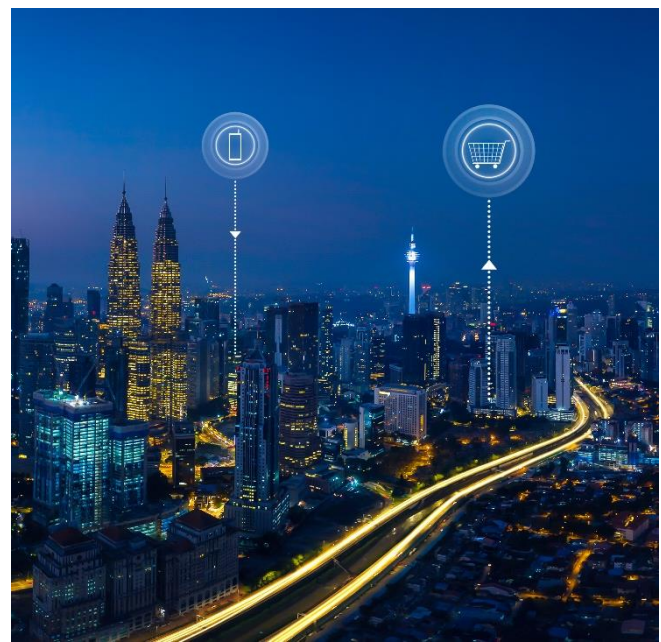


Sustainability is a growing priority for businesses of all sizes. As momentum increases to achieve emission goals, it's not just large corporations that are expected to disclose their carbon emission targets and results. Asset managers from businesses of varying sizes also have a part to play in reducing a building's impact on the environment. However, collating and interpreting data from multiple sources without errors and inconsistencies can be challenging for asset managers, and that is where a digital twin can help.

Through digital twin technology asset managers can capture a real picture of any asset to create a baseline and connect new or existing IoT devices from their building(s) to the digital twin and monitor their performance. The real-world data captured from the physical space or object provides users with an accurate snapshot in time of what's happening within a building which is then displayed in a virtual replica. Anything from air quality to room temperature can then be recorded and adjusted via the digital twin to keep in line with sustainability targets.

Having one central source of accurate, high-quality data can be of

great benefit to the whole organisation. By removing tedious tasks of collating and interpreting large amounts of information that would be subject to anomalies, the digital twin can provide quick and easy access to reliable, actionable information when it comes to sustainability measures.



With a digital twin, businesses can automate everything from collection to reporting and stay on top of their sustainability targets giving their company a competitive advantage in an environmentally conscious world.

If you would like to find out how creating digital twins may benefit your business, get in touch today.

hello@spinview.io

spinview.io